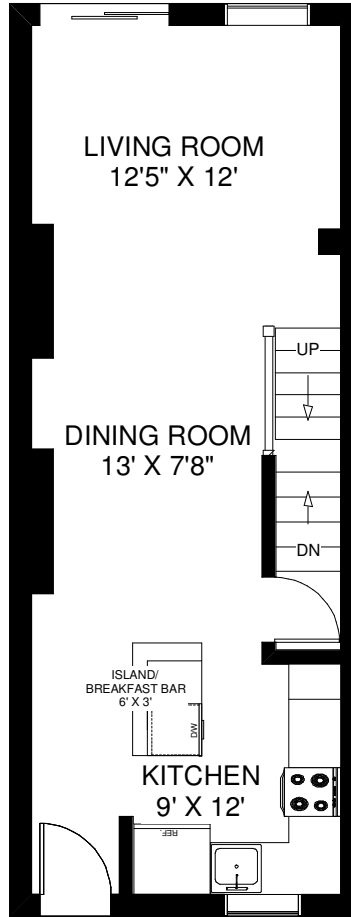
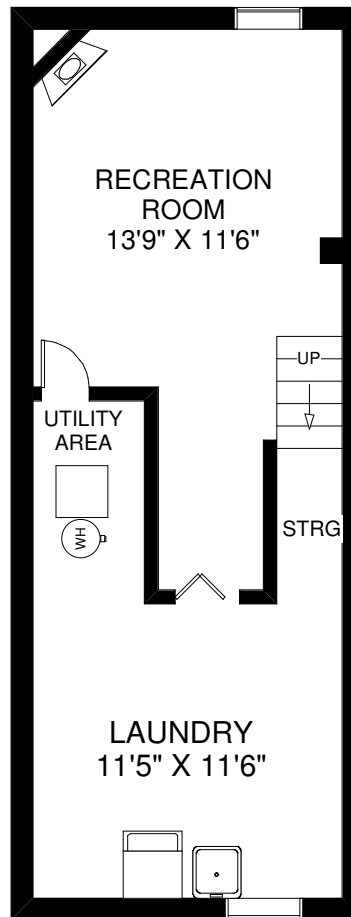


66 BOULTBEE AVENUE TH #12

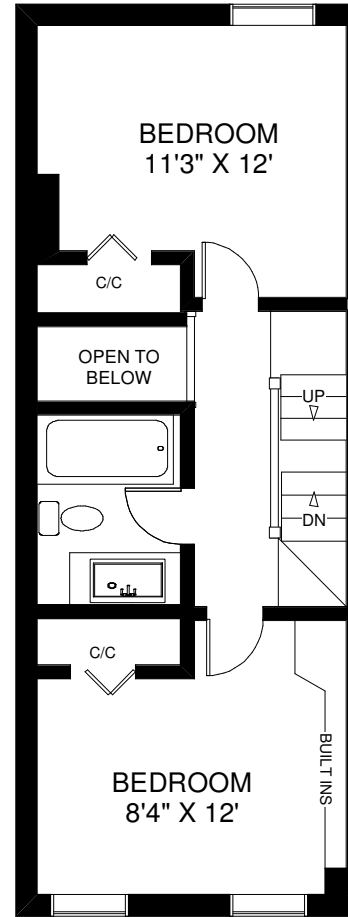
WALK OUT TO STONE PATIO
16'6" X 12'



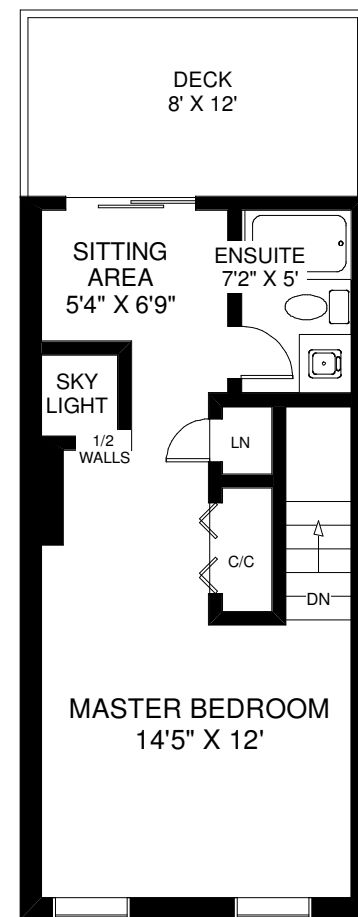
MAIN FLOOR
APPROXIMATELY 465 SQ FT



LOWER FLOOR
APPROXIMATELY 465 SQ FT



SECOND FLOOR
APPROXIMATELY 455 SQ FT



THIRD FLOOR
APPROXIMATELY 455 SQ FT

Note: Measurements & Calculations are approximate. Provided as a guideline only.